



Clinical Genetics



**“Partnering for Healthy Life”**

Welcome

**2019**

Happy New Year



**January**

Sun	Mon	Tue	Wed	Thu	Fri	Sat
		1	2	3	4	5
6	7	8	9	10	11	12
13	14	15	16	17	18	19
20	21	22	23	24	25	26
27	28	29	30	31		

**February**

Sun	Mon	Tue	Wed	Thu	Fri	Sat
					1	2
3	4	5	6	7	8	9
10	11	12	13	14	15	16
17	18	19	20	21	22	23
24	25	26	27	28		

**March**

Sun	Mon	Tue	Wed	Thu	Fri	Sat
31					1	2
3	4	5	6	7	8	9
10	11	12	13	14	15	16
17	18	19	20	21	22	23
24	25	26	27	28	29	30

**April**

Sun	Mon	Tue	Wed	Thu	Fri	Sat
	1	2	3	4	5	6
7	8	9	10	11	12	13
14	15	16	17	18	19	20
21	22	23	24	25	26	27
28	29	30				

**May**

Sun	Mon	Tue	Wed	Thu	Fri	Sat
			1	2	3	4
5	6	7	8	9	10	11
12	13	14	15	16	17	18
19	20	21	22	23	24	25
26	27	28	29	30	31	

**June**

Sun	Mon	Tue	Wed	Thu	Fri	Sat
30						1
2	3	4	5	6	7	8
9	10	11	12	13	14	15
16	17	18	19	20	21	22
23	24	25	26	27	28	29

**July**

Sun	Mon	Tue	Wed	Thu	Fri	Sat
	1	2	3	4	5	6
7	8	9	10	11	12	13
14	15	16	17	18	19	20
21	22	23	24	25	26	27
28	29	30	31			

**August**

Sun	Mon	Tue	Wed	Thu	Fri	Sat
				1	2	3
4	5	6	7	8	9	10
11	12	13	14	15	16	17
18	19	20	21	22	23	24
25	26	27	28	29	30	31

**September**

Sun	Mon	Tue	Wed	Thu	Fri	Sat
1	2	3	4	5	6	7
8	9	10	11	12	13	14
15	16	17	18	19	20	21
22	23	24	25	26	27	28
29	30					

**October**

Sun	Mon	Tue	Wed	Thu	Fri	Sat
		1	2	3	4	5
6	7	8	9	10	11	12
13	14	15	16	17	18	19
20	21	22	23	24	25	26
27	28	29	30	31		

**November**

Sun	Mon	Tue	Wed	Thu	Fri	Sat
					1	2
3	4	5	6	7	8	9
10	11	12	13	14	15	16
17	18	19	20	21	22	23
24	25	26	27	28	29	30

**December**

Sun	Mon	Tue	Wed	Thu	Fri	Sat
1	2	3	4	5	6	7
8	9	10	11	12	13	14
15	16	17	18	19	20	21
22	23	24	25	26	27	28
29	30	31				



eurofins

Clinical Genetics

2019





Founded in **1987**

Presence in **45** countries

Over **650** laboratories

Over **45,000** staff

Over **430,000** m<sup>2</sup> of laboratories

Portfolio of **150,000** analytical methods

More than **400 million** assays each year

Over **€ 3 billion** Euro revenue

## Eurofins Clinical Genetics India Pvt. Ltd.

#540/1, Doddanakundi Industrial Area 2, Hoodi, Whitefield, Bangalore 560048, Karnataka, India.

📞 +91 9513520807, +91 80 30982500

✉ salescg@eurofins.com

🌐 [www.eurofinsclinicalgenetics.co.in](http://www.eurofinsclinicalgenetics.co.in)





 **eurofins**

Clinical Genetics

# Comprehensive Genetic Testing Services from ECGI



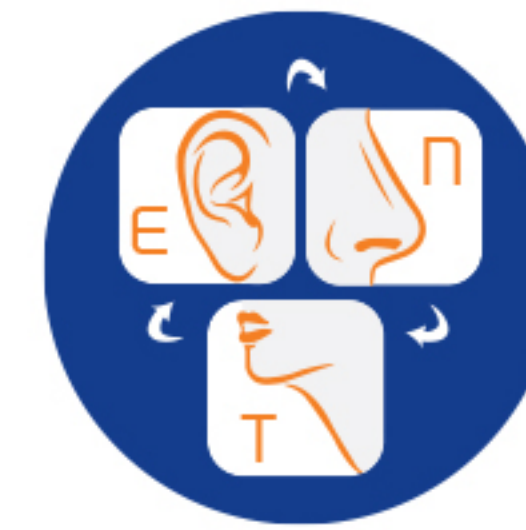
**CardioSure**



**DNASure**



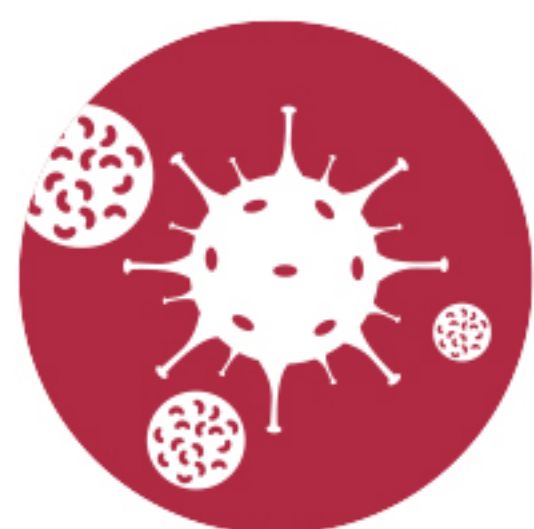
**EndocrinSure**



**ENTSure**



**HematoSure**



**ImmunoSure**



**MetaboSure**



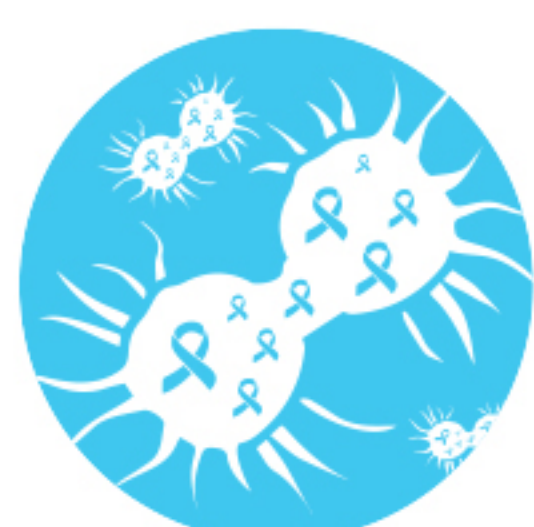
**NatalSure**



**NephroSure**



**NeuroSure**



**OncoSure**



**OpthalSure**



**PulmoSure**



**TissueSure**





Sun	Mon	Tue	Wed	Thu	Fri	Sat
		1 New Year	2	3	4	5
6	7	8	9	10	11	12
13	14	15	16	17	18	19
20	21	22	23	24	25	26 Republic Day
27	28	29	30	31		

## Birth Defects Prevention Month

Globally, 3.3 million/year deaths are associated with birth defects mainly anomalies. Some birth defects can be diagnosed before birth with Prenatal care and screening.

“Birth defects are common”

---

---

---

---

---

---

---

---





“Rare alone – strong together”



Sun	Mon	Tue	Wed	Thu	Fri	Sat
					1	2
3 World Cancer Day	4	5	6	7	8	9
10	11	12	13	14	15	16
17	18	19	20	21	22	23
24	25	26	27	28 Rare Disease Day		

### Rare Disease Day

1 in 15,000 people are affected by one of 6000 rare diseases in the world. Though individually rare but families of the affected person experience same kind of dilemma accessing treatments and information.

---

---

---

---

---

---

---

---





Sun	Mon	Tue	Wed	Thu	Fri	Sat
31					1	2
3	4	5	6	7	8 Women's Day	9
10	11	12	13	14	15	16
17	18	19	20	21 Holi	22	23
24	25	26	27	28	29	30

World Kidney Day

"Planet 50-50"

**International Women's Day**

Right now is a great time to do everything possible to help forge women's equality & celebrate their achievement. Ground is being made across many areas - yet there is still much work to do.

---

---

---

---

---

---

---

---





“Health is a right,  
not a privilege”

Sun	Mon	Tue	Wed	Thu	Fri	Sat
	1	2	3	4	5	6
7 World Health Day	8	9	10 Parkinson's Day	11	12	13
14	15	16	17 Hemophilia Day	18	19 Good Friday	20
21	22	23	24	25	26	27
28	29	30				

## World Health Day

It is important to look after the Health of every people as to make them more stable and strong to complete any task easily and quickly. World Health Day is celebrated to provide people with the awareness about the Health.

---

---

---

---

---

---

---

---





Sun	Mon	Tue	Wed	Thu	Fri	Sat
			1 May Day	2	3	4
5	6	7	8 Thalassemia Day	9	10	11
12	13	14	15	16	17 Hypertension Day	18
19	20	21	22	23	24	25
26	27	28	29	30	31	

## World Thalassemia Day!

Thalassemia is an inherited genetic blood disorder.  $\beta$ -thalassemia is the most common single gene disorder in India. Patients need blood transfusions to keep them alive. Premarital genetic testing can help prevent thalassemia.

“Genetic counseling can save families from thalassemia.”



“Together let’s  
break sickle cycle”

Sun	Mon	Tue	Wed	Thu	Fri	Sat
30						1
2	3	4	5	6	7	8
9	10	11	12	13	14	15
				Blood Donor Day		
16	17	18	19	20	21	22
		Sickle Cell Day			Yoga Day	
23	24	25	26	27	28	29

## World Sickle Cell Day

Approximately, 5,00,000 babies are born every year with sickle cell disease & 50% of them die before the age of 5 years. There is no definitive cure, but it can be avoided by pre-marital screening.

---

---

---

---

---

---

---

---





*Happy,  
Doctor's  
Day!*

Sun	Mon	Tue	Wed	Thu	Fri	Sat
	1 Doctor's Day	2	3	4	5	6
7	8	9	10	11	12	13
14	15	16	17	18	19	20
21	22	23	24	25	26	27
28 Hepatitis Day	29	30	31			

## Doctor's Day

Birth anniversary of legendary Dr. B.C. Roy. On this special day we appreciate the services of the doctors –the flat bearer of hope in trying times.

---

---

---

---

---

---

---

---





Happy and Healthy  
Independence Day



Sun	Mon	Tue	Wed	Thu	Fri	Sat
				1	2	3
4	5	6	7	8	9	10
11	12 Bakrid	13	14	15 Independence Day	16	17
18	19	20	21	22	23	24
25	26	27	28	29	30	31

### Independence Day

Disease eradication is vital to creating healthy nation. India has come long a way in disease eradication. India has now been declared free of Maternal and Neonatal Tetanus, Polio and Small Pox.

---

---

---

---

---

---

---

---





Sun	Mon	Tue	Wed	Thu	Fri	Sat
1	2 Ganesh Chaturthi	3	4	5	6	7
8	9	10	11	12	13	14
15	16	17	18	19	20	21
22	23	24	25	26	27	28
29 Heart Day	30					

**World Heart Day**

CVDs take 31% of all global deaths. Scale up the prevention of heart attack and strokes. Make a promise to eat healthily, get more active and say no to smoking.

**“Everyone deserves a healthy heart.”**

---

---

---

---

---

---

---

---





“Break silence.”

Sun	Mon	Tue	Wed	Thu	Fri	Sat
		1	2 Gandhi Jayanti	3	4	5
6 Maha Navami	7 Dussehra	8	9 Mental Health Day	10	11 Arthritis Day	12
13	14	15	16	17	18	19
20	21	22	23	24 World Polio Day	25	26
27	28	29 Diwali	30	31		

## World Mental Health Day

1 in 4 people in the world is affected by mental or neurological disorders at some point in their lives. WHO estimates in India 2,443 people per 100,000 populations suffer from mental disorders. Mental health and well-being need to be a priority.

---

---

---

---

---

---

---

---



# 2019 NOVEMBER

“For children nothing is more valuable than education, Nothing is more important than health.”

Sun	Mon	Tue	Wed	Thu	Fri	Sat
					1 Karnataka Rajyotsava	2
3	4	5	6	7	8	9
10	11	12	13	14 Children's Day	15	16
17	18	19	20	21	22	23
24	25	26	27	28	29	30

## Happy Children's day

“Healthy children not only grow up to be healthier adults, they are also better educated and contribute more to the economy. In India, huge inequality lies in healthcare & educational access in early childhood. access to Universal & healthcare hold key for bridging the gap.”

---

---

---

---

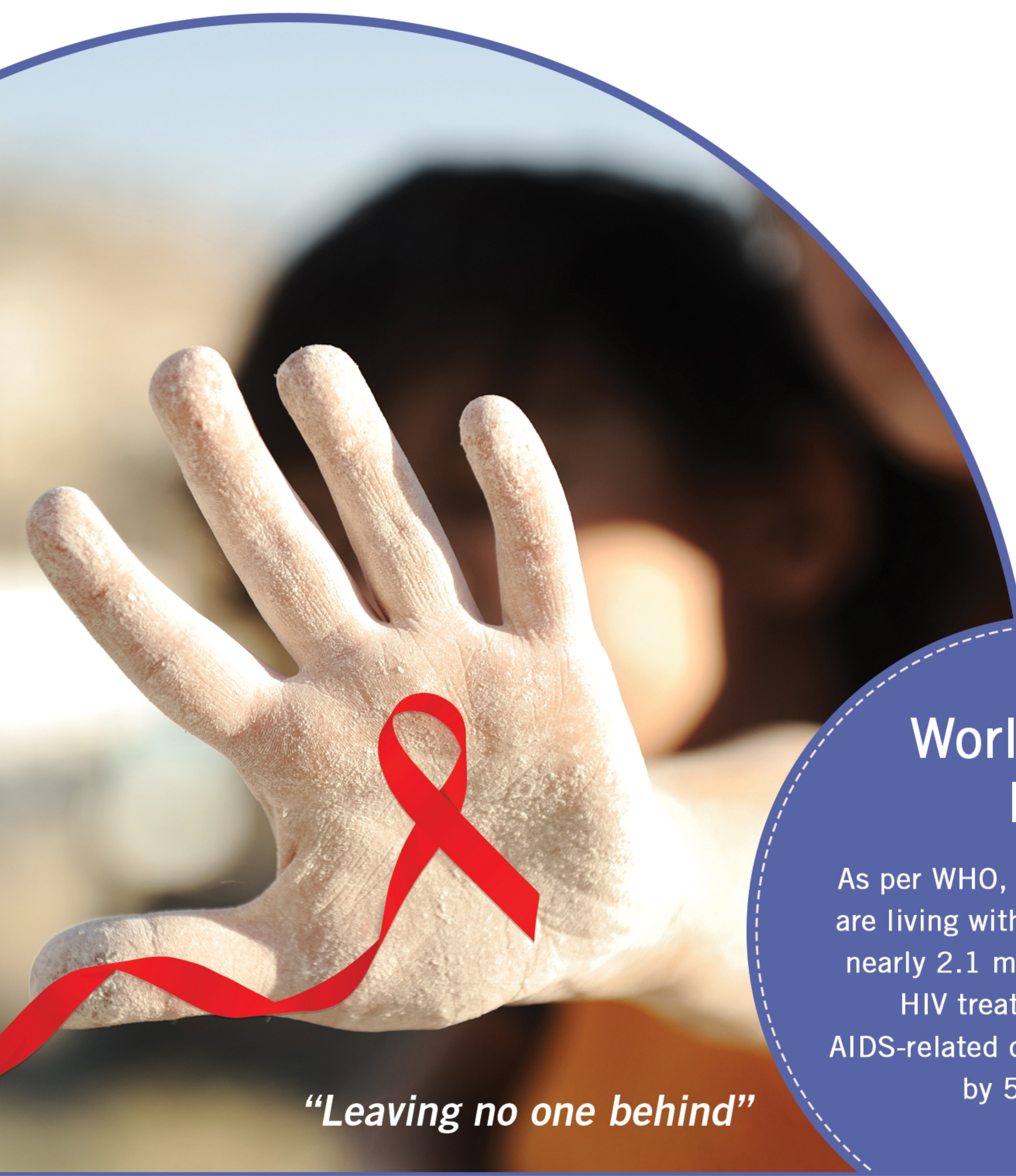
---

---

---

---





Sun	Mon	Tue	Wed	Thu	Fri	Sat
1 World AIDS Day	2	3	4	5	6	7
8	9	10	11	12	13	14
15	16	17	18	19	20	21
22	23	24	25 Christmas	26	27	28
29	30	31				

## World AIDS Day

As per WHO, 36.7 million people are living with HIV worldwide and nearly 2.1 million people are on HIV treatment. In India, AIDS-related deaths have declined by 54 percent.

*“Leaving no one behind”*

---

---

---

---

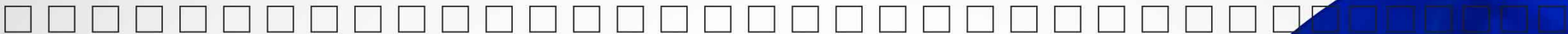
---

---

---

---





### January

Sun	Mon	Tue	Wed	Thu	Fri	Sat
			1	2	3	4
5	6	7	8	9	10	11
12	13	14	15	16	17	18
19	20	21	22	23	24	25
26	27	28	29	30	31	

### February

Sun	Mon	Tue	Wed	Thu	Fri	Sat
						1
2	3	4	5	6	7	8
9	10	11	12	13	14	15
16	17	18	19	20	21	22
23	24	25	26	27	28	29

### March

Sun	Mon	Tue	Wed	Thu	Fri	Sat
1	2	3	4	5	6	7
8	9	10	11	12	13	14
15	16	17	18	19	20	21
22	23	24	25	26	27	28
29	30	31				

### April

Sun	Mon	Tue	Wed	Thu	Fri	Sat
			1	2	3	4
5	6	7	8	9	10	11
12	13	14	15	16	17	18
19	20	21	22	23	24	25
26	27	28	29	30		

### May

Sun	Mon	Tue	Wed	Thu	Fri	Sat
31					1	2
3	4	5	6	7	8	9
10	11	12	13	14	15	16
17	18	19	20	21	22	23
24	25	26	27	28	29	30

### June

Sun	Mon	Tue	Wed	Thu	Fri	Sat
	1	2	3	4	5	6
7	8	9	10	11	12	13
14	15	16	17	18	19	20
21	22	23	24	25	26	27
28	29	30				

### July

Sun	Mon	Tue	Wed	Thu	Fri	Sat
			1	2	3	4
5	6	7	8	9	10	11
12	13	14	15	16	17	18
19	20	21	22	23	24	25
26	27	28	29	30	31	

### August

Sun	Mon	Tue	Wed	Thu	Fri	Sat
30	31					1
2	3	4	5	6	7	8
9	10	11	12	13	14	15
16	17	18	19	20	21	22
23	24	25	26	27	28	29

### September

Sun	Mon	Tue	Wed	Thu	Fri	Sat
		1	2	3	4	5
6	7	8	9	10	11	12
13	14	15	16	17	18	19
20	21	22	23	24	25	26
27	28	29	30			

### October

Sun	Mon	Tue	Wed	Thu	Fri	Sat
				1	2	3
4	5	6	7	8	9	10
11	12	13	14	15	16	17
18	19	20	21	22	23	24
25	26	27	28	29	30	31

### November

Sun	Mon	Tue	Wed	Thu	Fri	Sat
1	2	3	4	5	6	7
8	9	10	11	12	13	14
15	16	17	18	19	20	21
22	23	24	25	26	27	28
29	30					

### December

Sun	Mon	Tue	Wed	Thu	Fri	Sat
		1	2	3	4	5
6	7	8	9	10	11	12
13	14	15	16	17	18	19
20	21	22	23	24	25	26
27	28	29	30	31		



Clinical Genetics

# 2020





## **Eurofins Clinical Genetics India Pvt. Ltd.**

#540/1, Doddanakundi Industrial Area 2, Hoodi,  
Whitefield, Bangalore 560048, Karnataka, India.

📞 +91 9513520807, +91 80 30982500

✉ salesecgi@eurofins.com

🌐 [www.eurofinsclinicalgenetics.co.in](http://www.eurofinsclinicalgenetics.co.in)

202-C, A-Wing, Sumit Samarth Arcade, Off Aarey Road,  
Opp. Goregaon Station, Goregaon West, Mumbai - 400062.

📞 **Customer Care: +91 9513800015**

📞 **ECGI Sales: +91 9513520802**